

# Signal

## INSTALLATION MANUAL

### SIGNAL

Ref.#: SM.09.820.\_.\_  
9W AC LED module  
3000K, RA80+, 870lm



#### IMPORTANT

Always shut off power before  
cleaning and maintenance.



All products are manufactured to  
meet or exceed North American  
standards C22.2-250, UL 1598,  
C22.2-12, C22.2.9, UL 153.

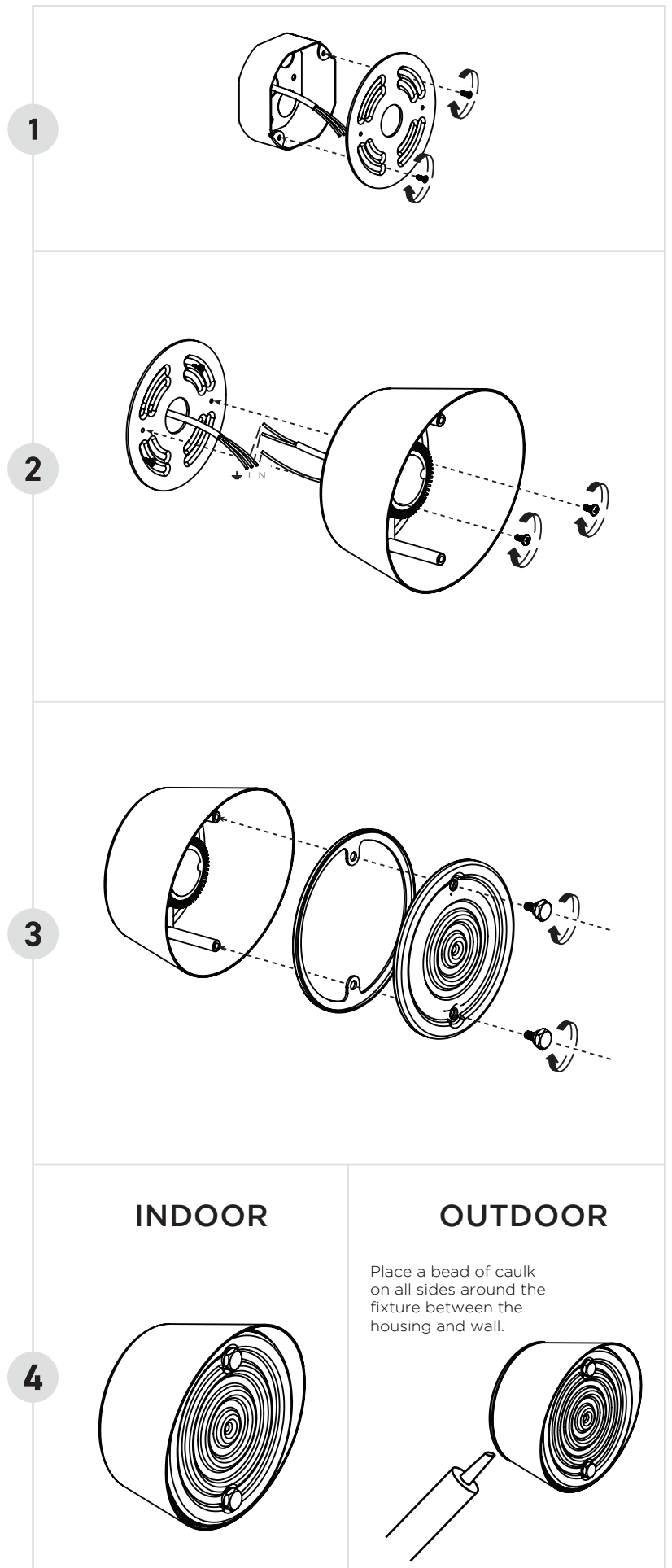
All preparation for installation of  
fixture is to be provided by the  
end user.

The description and measurements  
on this drawing are for information  
purposes only.

VISO © 2021 All rights reserved.



VISO LIGHTING



# Signal

## INSTALLATION MANUAL

### SIGNAL

Ref.#: MM.09.820.\_\_\_  
9W AC LED module  
3000K, RA80+, 870lm



#### IMPORTANT

Always shut off power before  
cleaning and maintenance.



All products are manufactured to  
meet or exceed North American  
standards C22.2-250, UL 1598,  
C22.2-12, C22.2.9, UL 153.

All preparation for installation of  
fixture is to be provided by the  
end user.

The description and measurements  
on this drawing are for information  
purposes only.

VISO © 2021 All rights reserved.



VISO LIGHTING

